



# The Propane Express

SPRING/SUMMER 2017

HANOVER, INDIANA

**Auxier Gas Service, Inc.**

657 W. LaGrange • PO Box 215

Hanover, IN 47243-0215

**812-866-2126 / Toll Free 800-288-7265**



## Auxier Gas Service has been in the retail propane gas business since 1955.

*We would like to thank our customers for your business and support.*

### Equal monthly payments plus a guaranteed rate

Traditionally, most people pay for their propane as it's delivered. We understand that this can sometimes be a hassle.

It's kind of like getting that bill for six months of car insurance. Have you ever wondered why you couldn't pay that bill monthly? Wouldn't it make planning a little easier?

Our **Guaranteed Budget Payment program** is designed to do just that. Not only do we **estimate your annual use and develop a payment plan** that meets your needs, we **also guarantee your rate**.

Each month, you'll make the same payment with the benefit of free financing for this service when payments are made as scheduled.

The **Guaranteed Budget Payment program guarantees your price** never exceeds a certain level, regardless of what the energy markets do.

**Keep Full delivery service is also included in the Guaranteed Budget Payment program** so you can forget about checking your tank gauge and calling for a delivery.

## The Guaranteed Budget Payment Program Begins In May

The capped price will be

# \$1.79 per gallon

(This excludes 100 gallon tanks)



# Out-Of-Gas Situation Highly Undesirable

Out-of-gas situations are always undesirable. An out-of-gas situation could result in serious safety hazards, including fire or explosion. If an appliance valve or a gas line is left open, a leak could occur when the system is recharged with propane. Please let us know if an appliance or system change has been made. And, if your propane tank runs out of gas, any pilot lights on your appliances will go out. This can be extremely dangerous.

## A LEAK CHECK IS REQUIRED.

In many states a propane retailer or qualified service technician must perform a leak check of your propane system before turning on the gas.

**Avoid out-of-gas situations by taking advantage of our free, Keep Full delivery service.** Auxier Gas Service will monitor your usage and current weather conditions to ensure you always have propane when you need it.

# How to Read Your Tank Gauge

The propane tank gauge is arguably one of the most important parts of a propane tank, as it lets you know how much propane is currently available in the tank, and helps you calculate how many gallons of propane remain. In order to allow room for gas expansion, propane tanks are considered full between 80-90% depending on the weather.

Weather and lifestyle choices heavily impact propane usage - which we think about when estimating our delivery schedule. And while we do everything we can to make sure you have propane when you need it, it does help to be aware of your propane use as well. Use this table to help estimate how many gallons your tank has available and if you are concerned about your propane level, just give us a call when your gauge is close to 20% so we can make sure to schedule services for you soon.

At Auxier Gas Service, your safety is very important to us. From time to time we become aware of safety recalls and we would like to share the information with you. For a complete list of appliance recalls, visit [www.applianceaid.com](http://www.applianceaid.com) & [www.cpsc.gov](http://www.cpsc.gov)

If you ever have a propane-related safety question or concern, please do not hesitate to contact us toll-free at 1-800-288-7265.

*We're always glad to help!*

# Do You Have This Type Of Gas Piping In Your Home Or Business?

## What To Look For:

CSST has a yellow or black plastic exterior coating and would typically be present inside walls and through and along floor and ceiling joists.

CSST should not be confused with flexible appliance connectors that attach directly to the appliance from the gas supply piping.

## Reduce Your Risk:

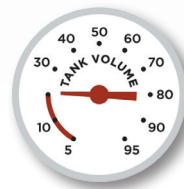
### 1. INSPECT

If your home or business was built after 1988, inspect it for CSST. If you had work performed on your gas piping system since 1988 - such as installing a clothes dryer, stove, fireplace, or other gas appliance - you should also inspect your building.

**If you are unsure as to whether CSST was installed, contact your builder; contractor; or a licensed, qualified professional for an evaluation of your home or business.**

### 2. PROTECT

If you find CSST after inspecting your home or business, it is strongly recommended that you contact a licensed electrician. The licensed electrician will make sure that your system is properly bonded and grounded and may be able to advise you on the installation of a lightning protection system.



# Your safety is always our first priority!

IF GAUGE READS	NUMBER OF GALLONS REMAINING				
	124 gal. tank	250 gal. tank	330 gal. tank	500 gal. tank	1000 gal. tank
80%	100	200	264	400	800
70%	87	175	231	350	700
60%	75	150	198	300	600
50%	63	125	165	250	500
40%	50	100	132	200	400
30%	38	75	99	150	300
<b>IF GAUGE READS LESS THAN 20%, ORDER GAS NOW!*</b>					
20%	25	50	66	100	200
10%	13	25	33	50	100

# Know Propane's Odor

Propane smells like rotten eggs, a skunk's spray, or a dead animal. Some people may have difficulty smelling propane due to their age, a medical condition; or the effects of medication, alcohol, tobacco, or drugs. Consider purchasing a propane gas detector as an additional measure of security.

**ODOR FADE** is an unintended reduction in the concentration of the odor of propane making it more difficult to smell. Although, rare, several situations can cause odor fade:

- The presence of air, water or rust in a propane tank or cylinder
- The passage of leaking propane through the soil

Since there is a possibility of odor fade or problems with your sense of smell, you should respond immediately to even a faint odor of gas.

## Combination Propane & Carbon Monoxide (CO) Detectors Available at Auxier Gas Service.

Auxier Gas provides a combination propane/CO detector for the home for a small fee. This detector provides an additional measure of security in homes with little-used areas or with occupants who have difficulty smelling propane.

*Please note that there are no construction methods or safety measures that can completely protect a structure from a direct lightning strike.*

# If You Smell Gas

- 1. NO FLAMES OR SPARKS!** Immediately put out all smoking materials and other open flames. Don't operate lights, appliances, telephones, or cell phones. Flames or sparks from these sources can trigger an explosion or fire.
- 2. LEAVE THE AREA IMMEDIATELY!** Get everyone out of the building or area if you suspect gas is leaking.
- 3. SHUT OFF THE GAS.** Turn off the main gas supply valve on your propane tank if it is safe to do so. To close the valve turn it to the right (clockwise).
- 4. REPORT THE LEAK.** From a neighbor's home or other nearby building away from the gas leak, call your propane retailer right away. If you can't reach your propane retailer, call 911 or your local fire department.
- 5. DO NOT RETURN TO THE BUILDING OR AREA** until your propane retailer determines that it is safe to do so.
- 6. GET YOUR SYSTEM CHECKED.** Before you attempt to use any of your propane appliances, your propane retailer or a qualified service technician must check your entire system to ensure that it is leak-free.

## Carbon monoxide AND your safety

### WHAT IS CARBON MONOXIDE (CO)?

You can't taste or smell CO, but it is a very dangerous gas, produced when any fuel burns. High levels of CO can come from appliances that are not operating correctly, or from a venting system or chimney that becomes blocked.

**CO CAN BE DEADLY!** High levels of CO can make you dizzy or sick (see below). In extreme cases, CO can cause brain damage or death.

### Symptoms of CO poisoning include:

- Headache
- Dizziness
- Fatigue
- Shortness of breath
- Nausea

### If you suspect CO is present, act immediately!

1. If you or a family member shows physical symptoms of CO poisoning, get everyone out of the building and call 911 or your local fire department.
2. If it is safe to do so, open windows to allow entry of fresh air, and turn off any appliances you suspect may be releasing CO.
3. If no one has symptoms, but you suspect that CO is present, call your propane retailer or a qualified service technician to check CO levels and your propane equipment.

### TO HELP REDUCE THE RISK OF CO POISONING:

- Have a qualified service technician check your propane appliances and related venting systems annually, preferably before the heating season begins.
- Install UL-listed CO detectors on every level of your home.
- Never use a gas oven or range-top burners to provide space heating.
- Never use portable heaters indoors unless they are designed and approved for indoor use.
- Never use a barbecue grill (propane or charcoal) indoors for cooking or heating.
- Regularly check your appliance exhaust vents for blockage.

### SIGNS OF IMPROPER APPLIANCE OPERATION THAT CAN GENERATE HIGH CO LEVELS:

- Sooting, especially on appliances and vents
- Unfamiliar or burning odor
- Increased moisture inside of windows



HANOVER, INDIANA

657 W. LaGrange  
PO Box 215  
Hanover, IN 47243-0215

PRSR.T.STD.  
U.S. POSTAGE  
PAID  
Your Propane  
Resources Co.

**CONTACT US:**



Call us toll free:  
**1-800-288-7265**

Send an email:  
**auxiergas@aol.com**



Visit us online:  
**auxiergasindiana.com**

Check and Debit/Credit Card Payments  
can be made online at:  
**auxiergasindiana.com**



If you are mailing a  
payment, please send to:  
**Auxier Gas Service**  
**PO Box 215**  
**Hanover, IN. 47243**

**Details about  
Budget Billing  
Enclosed!**

# 20-pound Grill Cylinder Refills



Save **\$2**

(Limit one per customer. Expires Sept. 30, 2017)

## Propane Grill Safety Tips for Summer

Grilling is one of summer's most enjoyable - and delicious - pastimes. Food cooked on a propane grill is healthy, delicious and the centerpiece of a great summer party. However, it's important to follow safety procedures. Here are a few important tips to keep in mind.

- Don't smoke while handling the propane cylinder. Also, don't use matches or lighters to check for leaks.
- When not in use, store tanks upright and outdoors - never in the house or garage. Make sure your cylinder storage area is away from heat, matches or other sources of ignition.
- When taking your grill out of storage, be sure to check for leaks, rust or deterioration, proper assembly and burner obstructions.
- Always grill outdoors in a well-ventilated area. Keep your grill a safe distance from your home's exterior, deck railings, eaves or any overhanging tree branches.
- When igniting the burners, don't lean over the grill. Always keep the lid open to prevent gas build-up, which could cause an explosion.
- Clean up grease or fat buildup from the grill and drip trays.
- Don't leave your grill unattended, and make sure children and pets stay away from the grill.
- When you're done grilling, turn off the grill burner controls and close the cylinder valve. Ensure your grill has cooled completely before covering or storing it.
- If you store the propane grill indoors, always disconnect and remove the propane cylinder and store it outdoors.
- Clean and maintain your grill twice a year, checking for rust, as well as inspecting hoses, burner parts, air shutter and valves or vents.